



EMEA

## *Full line*

Generators specifically  
built for rental applications

3 kVA - 550 kVA

[powersystems.rehlko.com/emea](https://powersystems.rehlko.com/emea)



# We give the world *power*

## Solutions for all sectors

With our generator set ranges, stretching from 2 to 4,500 kVA, we provide energy solutions for different applications (continuous and backup production) and for all sectors: data centers, health, water treatment, telecommunications, construction, energy producers, industry, transport, retail trade and distribution, etc.

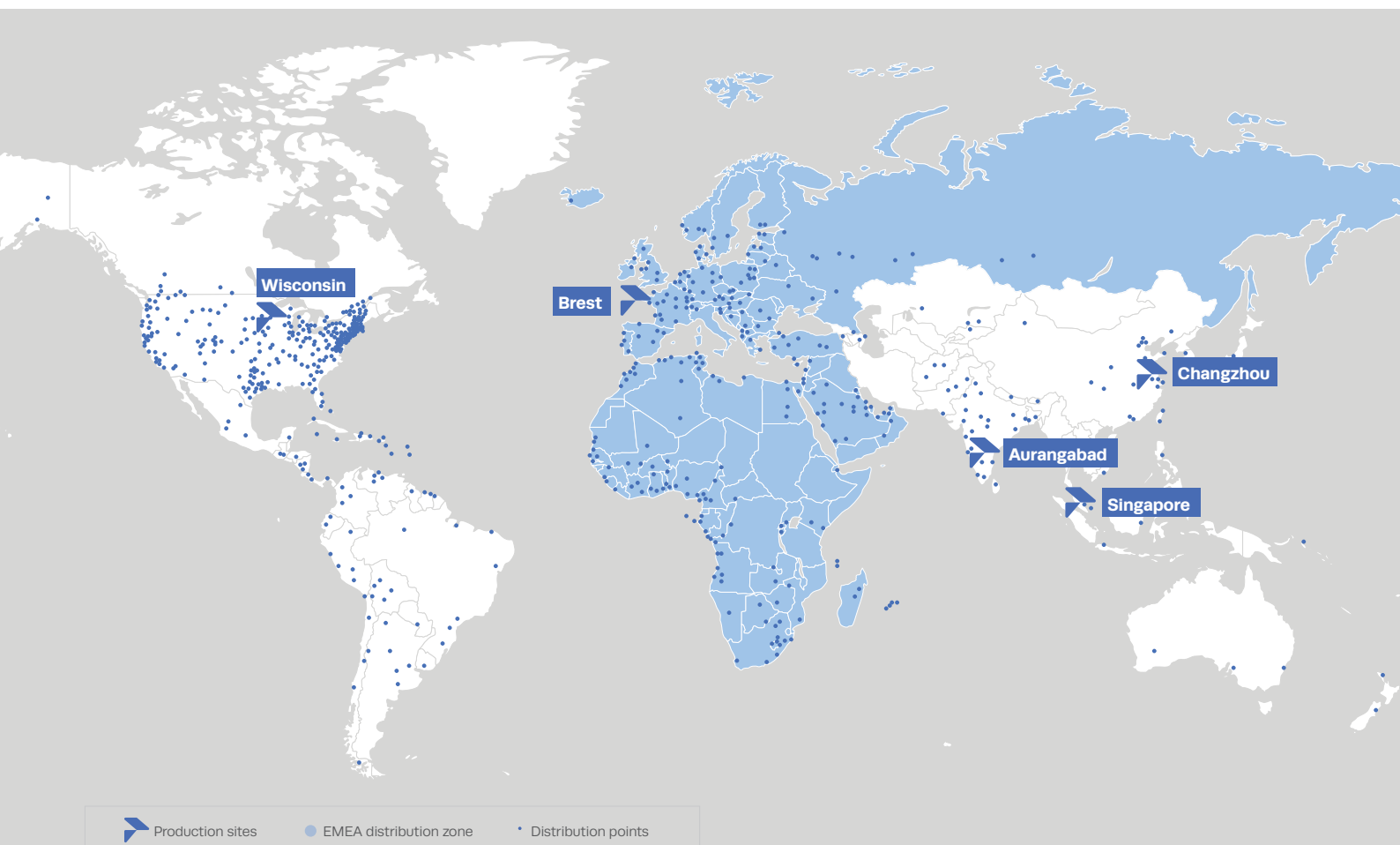
## Our tried-and-tested process: total integrity at every step

From the initial contact to project planning, execution and maintenance, Rehiko offers you complete end-to-end assistance.

Our dedicated project team evaluates the scope, demands and challenges of your project and provides you with full support and transparency at each stage of the project. By working in close collaboration with you, we ensure that your project is equipped with reliable power supply systems tailored to your specifications and your budget.

## Service and support: The assistance you need. Anytime, anywhere

With numerous direct service centers and more than 800 distributors worldwide, Rehiko's customers are guaranteed an emergency service 24/7 and reactive after sales support. Certified and enjoying regular training, our factory-based technicians are always ready to provide a troubleshooting service, advice and post-installation service and support.



# The 10 key *Fundamentals*



## 1 - Sound levels

### Optimised and certified

Our ranges of enclosures and containers are carefully studied to guarantee the best noise reduction performances. Our sound level measurements are carried out according to european directives and iso standards and are certified by cetim (technical center for the mechanical industry).

## 2 - Power maintained

### Even in extreme conditions

Rehko's engineering department ensures the coolant systems are adapted perfectly so that maximum power can be provided, even at high temperatures.

## 3- Quality testing

Each rehko generating set is prototyped in the laboratory and tested in production to ensure it operates exactly as it should.

## 4 - Homologation in accordance with the highest standards

Rehko does not compromise when it comes to the quality of its products and their compliance with standards. They are designed to meet even more demanding criteria than those set by the directives.

## 5 - Low fuel consumption

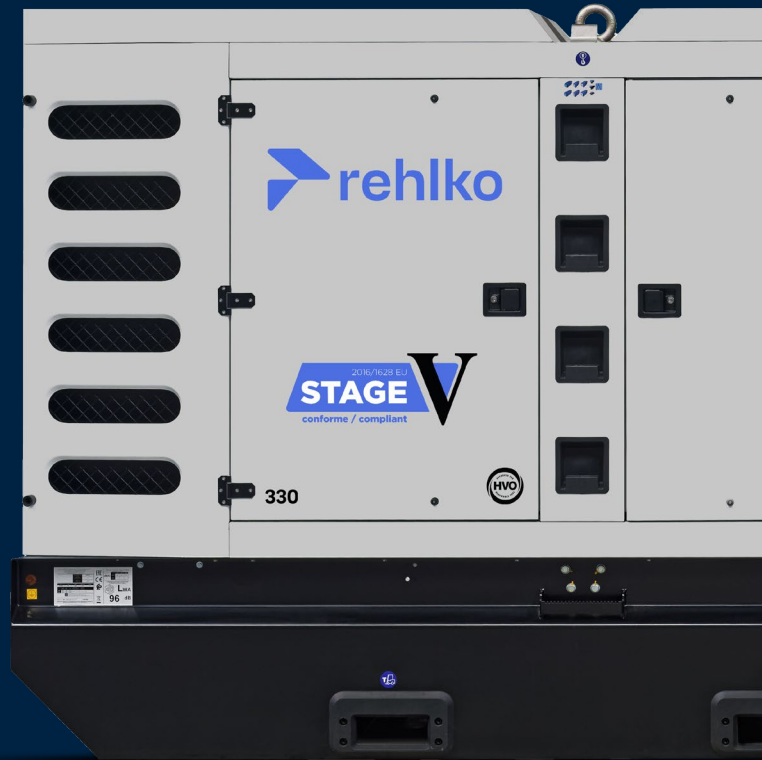
Our engineers and technicians develop tailored solutions to further improve consumption of fuel and the components chosen for the high performance they offer.

## 6 - Robust base frames and high-quality enclosures

A high-quality enclosure protects the generating set's components whilst enabling it to run under the most extreme conditions (high temperatures, dusty, humid or sandy environments, etc.). Rehko base frames and enclosures are produced in france, and their suppliers selected according to very strict criteria.

## 7 - Quality of the electricity produced

A high quality current, in voltage and frequency in compliance with the iso 8528-5 standard, provides a high starting and loading capacity for critical applications.



## 8 - Protecting installations and individuals

Rehko is developing solutions on a daily basis to further enhance the safety of the generator and its users (modular management of neutral connections, precision circuit breakers, engine preheating, etc.).

## 9 - Small footprint high performance

The footprint of a generator, in both surface area and volume, is key to ensuring its integration, regardless of space constraints. Thanks to their innovative engineering, rehko generating sets pack big performance into a compact frame.

## 10 - References in stock all over the world

X-press is a range of standard generators stocked across the world, which can be delivered to you within a very short lead time.



# Rental Power an extensive range for a *sustainable* *investment*



A specialist in made-to-measure energy solutions for over 100 years, Rehiko has used its skills and expertise to help its rental customers meet very specific requirements through the definition of a Rental Power range from 3 kVA to 550 kVA:

3 KVA

550 KVA



## PORTABLE POWER

from 3 kW single-phase to 15 kVA three-phase

Light, compact and extra strong.

## RENTAL COMPACT

from 20 kVA to 550 kVA  
(CE-compliant)

An innovative concept for specific mobile energy requirements within the European Union and the UK: ease of use, safety and performance.

## RENTAL COMPACT

from 66 kVA to 220 kVA  
(Not CE-compliant)

An innovative concept for specific mobile energy requirements outside the European Union and the UK: ease of use, safety and performance.

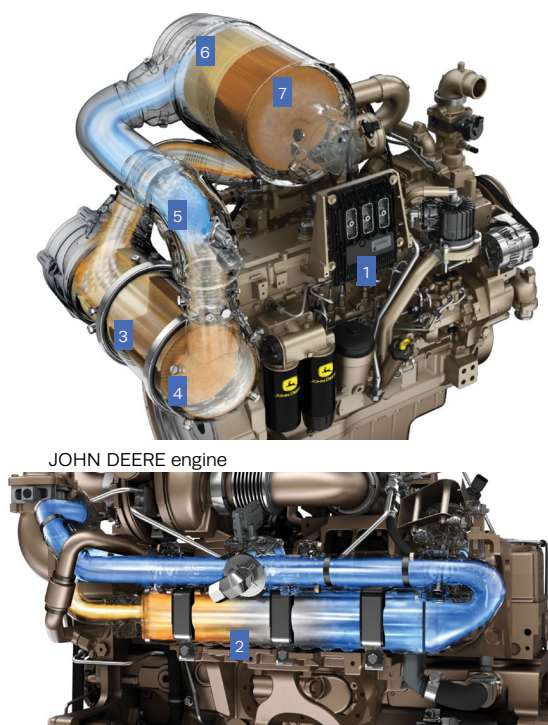
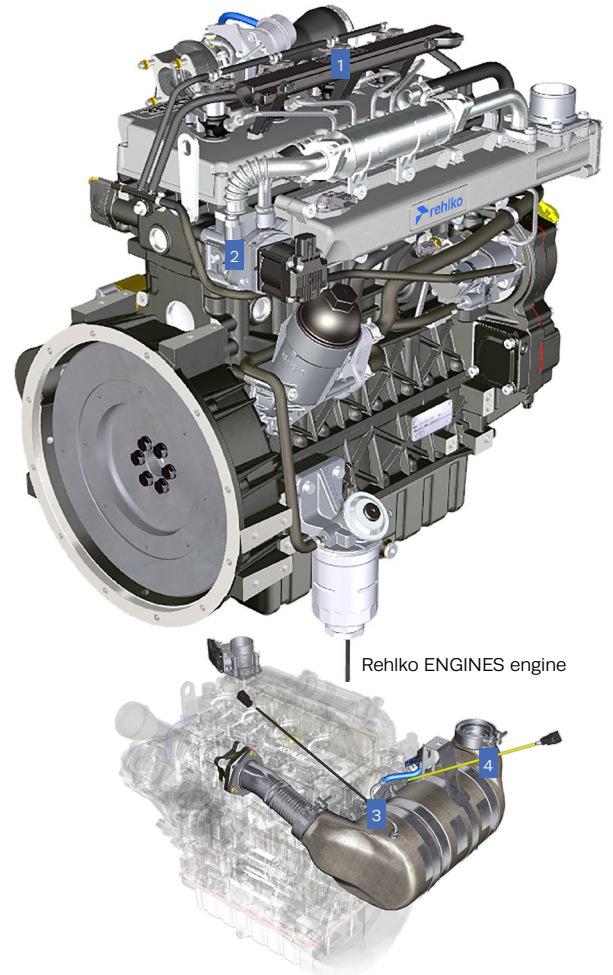
# Reducing pollutant emissions without compromising *on power*

All engines with no output limit designed for use in the UK and the EU must conform to the STAGE V standard.

These regulations cover all mobile motorised off-road equipment and more specifically mobile generating sets.

## After-treatment equipment on the Rental Compact Stage V range

- 1 COMMON RAIL** with optimised computer calibration to minimise pollutants.
- 2 EGR (EXHAUST GAS RECIRCULATION) VALVE:** a proportion of the exhaust gases is reinjected into the engine intake to be burnt more efficiently, thereby reducing the amount of NOx.
- 3 DOC (DIESEL OXIDATION CATALYST):** its honeycomb structure covered with metal catalysts enables a proportion of the CO, HC and NOx to be converted to water, carbon dioxide and nitrogen dioxide.
- 4 DPF (DIESEL PARTICULATE FILTER):** the remaining particles pass through the DPF, which collects them and burns them using the heat from the engine and the DOC.



- 5 DEF (DIESEL EXHAUST FLUID) INJECTOR:** a mixture of urea and water stored in a special tank is injected into the exhaust circuit to be mixed with the gases
- 6 SCR (SELECTIVE CATALYTIC REDUCTION):** the ammonia contained in the urea is mixed with the engine's exhaust gases in the SCR catalytic converter to reduce the NOx, converting it to nitrogen and carbon dioxide
- 7 AOC (AMMONIA OXIDATION CATALYST):** used to eliminate residual ammonia downstream of the SCR.



# Portable range

Single phase | Three phase

3kVA ▶ 15 kVA

## Power Within Reach

### Generating sets

Our range of portable generators from 3 to 16 kVA brings reliable energy wherever you need it.

Designed to be compact, durable, and easy to use, they meet the demands of both professionals and individuals. In addition to our generators, we also offer a selection of water pumps and welding sets, providing a complete solution for even the most demanding jobs.

### Welding sets

Welding sets offer a 2-in-1 solution (generating set + welding set) for high-performance regular use.

## Waterpump

Description	ENGINE			WATERPUMP								OPTIONS				
	Brand	Type	Type liquide	Particle size (mm)	Suction diameter (mm)	Total dynamic head (m)	Maximum flow rate (m3/h)	Fuel	Fuel tank (L)	Autonomy 75% (h)	Guaranteed level of sound power Lwa dB(A)	Acoustic pressure at 7 m in dB(A)	Trolley kit	Protective cover	Hose kit	Quick connector
ST 2.38 C5	Honda	GX160_C5	TL01	8	50	27	38,0	ES	3,1	3,4	104	75		RHO	R11	R13
ST 3.60 C5	Honda	GX160_C5	TL01	8	76	26	54,0	ES	3,1	3,4	105	75		RHO	R12	R14
TR 2.35 C5	Honda	GX160_C5	TL02	8	50	26	35,0	ES	3,1	3,4	104	75		RHO	R11	R13
TR 3.60 C5	Honda	GX160_C5	TL02	8	76	26	54,0	ES	3,1	3,4	105	76		RHO	R12	R14
HP 2.26 C5	Honda	GX160_C5	TL04	8	50	57	26,4	ES	3,1	3,4	108	77		RHO		
XT 3.78 C5	Honda	GX240_C5	TL03	27	76	27	80,4	ES	5,3	2,7	110	80		RHO	R12	R14
TRASH 3 C5	Rehiko	KD350_C5	TL03	20	76	25	65,0	GO	4,3	3,1	110	81	RKB2	RH1	R12	STD
TRASH 4 C5	Rehiko	KD350_C5	TL03	20	100	17	96,0	GO	4,3	3,1	110	81	RKB2	RH1	R21	STD

Portable range  
Generating sets  
Welding sets

## Rental Power Range

Single phase

3 kVA

15 kVA

Three phase



**Diesel 15 LC TA silenceC5**  
Three phase generating set



**Perform 3000C5**  
Single-phase generating set

Description	kW (max)	kVA (max)	ENGINE					Guaranteed level of sound power Lwa dB(A)	Acoustic pressure at 7 m in dB(A)	Dimensions (lxwxh) cm	Weight (kg)	OPTIONS				
			Brand	Type	Oil cut-out	Fuel tank (L)	Autonomy (h)					Differential protection	Trolley kit	Lifting eye	Sockets code	Retention container
<b>SINGLE-PHASE</b>																
PERFORM 3000 C5/XL C5	2,8	-	Rehlko	CH270_C5	YES	4,1/13	3,2/10	96	67	65x51x46	45/47	o	o	o	1L	RRB1
PERFORM 4500 C5/XL C5	4	-	Rehlko	CH395_C5	YES	7,3/18	4,3/10,6	96	68	71x55,5x49	62/67	o	o	o	P1L	RRB2
PERFORM 6500 C5/XL C5	6,3	-	Rehlko	CH440_C5	YES	7,3/18	2,8/6,9	97	69	81x55,5x59	73/86	o	o	o	P1H	RRB3
TECHNIC 10000 A C5	10,3	-	Rehlko	CH680_C5	YES	35	7	97	69	89,5x57x77	163	o	o	x	P1ZD	x
DIESEL 6000 A SILENCE C5	4,9	-	Rehlko	KD15-440E_C5	YES	27	22,5	92	63	99x61,5x96	198	o	o	•	P1ZD	•
DIESEL 10 LC A SILENCE C5	8,3	-	Rehlko	KDW702-H_C5	YES	27	10,4	94	65	121x79x106	310	o	o	•	P1ZL	•
DIESEL 12 LC A SILENCE C5	12	-	Rehlko	KDW1003-H_C5	YES	50	13,9	95	66	141x80x105	358	o	x	•	P1AF	x
<b>TRIPHASE</b>																
PERFORM 5500 T C5	-	5,6	Rehlko	CH395_C5	YES	7,3	4,3	96	68	81x55,5x59	74	o	o	o	P1J	RRB4
PERFORM 7500 T C5	-	8,1	Rehlko	CH440_C5	YES	7,3	2,8	97	69	81x55,5x59	94	o	o	o	P1J	RRB5
TECHNIC 15000TA C5	-	14,4	Rehlko	CH680_C5	YES	35	7	97	69	89,5x57x77	172	o	o	x	P1ZE	x
DIESEL 6500 TA SILENCE C5	-	6,5	Rehlko	KD15-440E_C5	YES	27	22,5	92	63	99x61,5x96	216	o	o	•	P1ZE	•
DIESEL 15 LC TA SILENCE C5	-	11	Rehlko	KDW702-H_C5	YES	27	10,4	94	65	121x79x106	315	o	o	•	P1ZM	•
DIESEL 16 LC TA SILENCE C5	-	15,6	Rehlko	KDW1003-H_C5	YES	50	13,9	95	66	141x80x105	364	•	x	•	P1ZS	x

• Standard    o Optional    x Unavailable    sockets pack - sockets code - see page 14

## Welding sets

Description	kW (max)	kVA (max)	ENGINE		WELDING		ROD		Fuel tank (L)	Autonomy (h)	Guaranteed level of sound power Lwa dB(A)	Acoustic pressure at 7 m in dB(A)	Dimensions (lxwxh) cm	Weight (kg)	OPTIONS			
			Brand	Type	35% welding cycle (normal)	60% welding cycle (intensive)	Min. diam. (mm)	Max. diam. (mm)							Differential protection	Trolley kit	Welding kit	Sockets code
<b>SINGLE-PHASE</b>																		
WELDARC 200 C5	4	-	Rehlko	CH440_C5	200	170	1,6	4	7,3	2,8	97	69	81x55,5x59	94	•	•	•	P1L
<b>TRIPHASE</b>																		
WELDARC 220 T C5	-	7,1	Rehlko	CH440_C5	200	170	1,6	4	7,3	2,8	97	69	81x55,5x59	95	•	•	•	P1J
WELDARC 300 TE XL C5	-	8,8	Rehlko	CH680_C5	300	250	2,5	5	33	8,7	97	68	89,5x57x77	171	•	RKB2	x	P1K

• Standard    Sockets pack - sockets code - see page 14



# Rental compact range

*Flawless performance*  
in line with the 5 key principles of the rental market

Rehko's Rental COMPACT line provides the concrete solution that generating set rental customers have been waiting for. Ingenuity, practicality and industrial capability are the key ingredients in these intuitive products designed to be functional and robust. They combine compactness, strength, modularity, ease of use and high performance.



## *Robustness*

## *Safety*

## *Maintenance*

## *Usability*

## *Handling*



Compact-resistant for use in the most demanding conditions without compromising performance.

Ensuring user safety during the machine's handling, connection and operating phases. Guaranteeing protection of the generating set to improve its service life.

A structured design to allow quick, easy access to consumable and mechanical parts during cleaning and maintenance. The enclosure can also be easily removed to allow easy access for more thorough maintenance procedures.

Designed with the machine's ease of use in mind. Operating and connection phases designed for extra user comfort.

Ensuring easy handling for the transport and on-site moving phases.

# Rental compact always ready to meet *your needs*



## Usability

- 1 Dedicated access
- 2 Controls and bus bars at the rear of the machine
- 3 Access door to radiator and urea tank

## Maintenance

- 4 Enclosure easy to remove for straightforward access to the engine and alternator
- 5 Fuel pre-filter
- 6 Oil drainage pump
- 7 Access door or panel to facilitate radiator cleaning

## Handling

- 8 Integrated lifting eye
- 9 Forklift pockets and shock-absorbing bumpers
- 10 Traction bar to move the genset on the ground using traction

## Safety

- 11 Doorstop devices
- 12 Large access doors with doorstop devices to prevent accidental opening during transport
- 13 Watertight and dustproof control unit containing electronic and electrical equipment

## Robustness

- 14 Extra-wide oversized base frame (retention container designed to hold 110 % of the generating set's fluid capacity, tank with 24-hour autonomy)
- 15 Robust and compact design
- 16 Heavy duty air filter with obstruction indicator
- 17 Arep double impregnation alternator
- 18 Watertight wiring harness & connectors



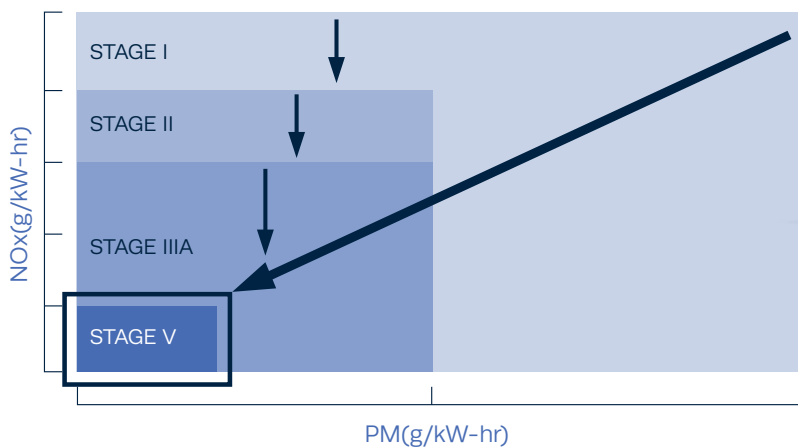
# Rental compact range

**EC-compliant - EU and UK**

20kVA ▶ 550 kVA

Rental energy solutions for rental customers and construction professionals

Generating sets equipped with engines that conform to STAGE V regulations include various systems used to reduce microparticles for health and environmental protection.



**Rental compact R330C5**  
Generating set



Rental range  
Generating sets  
EC-compliant

## Rental compact Range

20 kVA

550 kVA



**Rental compact R20C5**  
Generating set



**Rental compact R550C5**  
Generating set



	R20C5	R50C5	R110C5	R165C5	R220C5	R330C5	R550C5
<b>GENERAL DATA</b>							
PRP power (1) (kVA/kW)	18/14.4	45/36	100/80	150/120	200/160	300/240	500/400
ESP power (2) (kVA/kW)	20/16	50/40	110/88	165/132	220/176	330/264	550/440
Rated current (A)	28	71	159	238	318	476	794
Sound level dB(A) @ 1 meter	75	77	79	75	78	76	82
Sound level dB(A) @ 7 meters	62	67	68	65	68	66	73
Sound level (Lwa)	91	96	97	94	97	96	102
<b>ENGINE DATA / 1500 RPM</b>							
Compliance with emissions standards	Stage V	Stage V	Stage V	Stage V	Stage V	Stage V	Stage V
Brand	Rehiko	Rehiko	JOHN DEERE	JOHN DEERE	JOHN DEERE	JOHN DEERE	JOHN DEERE
Model	KDI1903-EU5	KDI2504T-CR-EU5	4045HP551	6068HP550	6068CP550	6090CP550	6136CG550
Prime output (kW)	17.2	43.5	94	150	184	276	462
Number of cylinders	3	4	4	6	6	6	6
Cubic capacity (L)	1,9	2,5	4,5	6,7	6,7	8,9	13,6
Consumption at 100% PRP load (L/h)	4,8	11,0	23,8	35,6	43,4	65,2	109,4
Consumption at 75% PRP load (L/h)	3,7	8,8	17,9	26,7	32,2	48,3	78,7
Fuel/Cooling	Diesel/Water	Diesel/Water	Diesel/Water	Diesel/Water	Diesel/Water	Diesel/Water	Diesel/Water
<b>TANK CAPACITY</b>							
Fuel tank (L)	153	390	475	735	735	1083	1280
Low capacity fuel tank (L)	X	X	365	X	X	X	X
DEF tank (L)	X	X	56	113	113	113	113
<b>FUEL TANK AUTONOMY (HOURS)</b>							
at 100% PRP load	31,9	35,5	20,0	20,6	16,9	16,6	11,7
at 75% PRP load	41,4	44,3	26,5	27,5	22,8	22,4	16,3
<b>DEF TANK AUTONOMY (HOURS)</b>							
at 100% PRP load	X	X	30,4	74,2	64,0	39,6	23,1
at 75% PRP load	X	X	51,4	96,6	93,4	73,5	29,3
<b>DIMENSIONS</b>							
	M3126	M3128	M5129	M5226		M5227	M5228
Length (mm)	1850	2545	3160	3884	3884	4332	5000
Width (mm)	901	1150	1191	1191	1191	1360	1611
Height (mm)	1355	1824	2231	2368	2368	2580	2605
Weight in running order (in kg)	933	1910	3020	4194	4401	5320	7640
<b>INSTRUMENTATION &amp; CONTROL</b>							
APM*	303	403	403	403	403	403	403

\* Advanced Power Management

(1) PRP: Prime power available continuously with variable load for an unlimited time per year in accordance with ISO 8528-1

(2) ESP: Standby power available for emergency use under variable load in accordance with ISO 8528-1, no overload available under this service



# Rental compact range

**Non-EC-compliant - Outside EU and UK**

66kVA ▶ 220 kVA

**Rental energy solutions for rental customers and construction professionals**

An innovative concept providing concrete solutions for rental customers. Robust generating sets with a functional design combining ingenuity, compactness and performance.



**Rental compact R66C3**  
Generating set

Rental range  
**Generating sets**  
 Not EC compliant

## Rental compact Range

66 kVA

▼  
 220 kVA



**Rental compact R66C3**  
 Generating set



**Rental compact R165C3**  
 Generating set

	R66C3	R110C3	R165C3	R220RC
<b>GENERAL DATA</b>				
PRP power (1) (kVA/kW)	60/48	100/80	150/120	200/160
ESP power (2) (kVA/kW)	66/53	110/88	165/132	220/176
Rated current (A)	95	159	238	318
Sound level dB(A) @ 1 meter	77	76	78	78
Sound level dB(A) @ 7 meters	65	65	68	68
Sound level (Lwa)	96	94	97	97
<b>ENGINE DATA / 1500 RPM</b>				
Compliance with emissions standards	Stage IIIA	Stage IIIA	Stage IIIA	Not certified
Brand	JOHN DEERE	JOHN DEERE	JOHN DEERE	JOHN DEERE
Model	4045HFS85	4045HFS87	6068HFS85	6068HFG82
Prime output (kW)	56	94	139	184
Number of cylinders	4	4	6	6
Cubic capacity (L)	4,5	4,5	6,7	6,7
Consumption at 100% PRP load (L/h)	14,9	24,4	35,0	46,0
Consumption at 75% PRP load (L/h)	11,9	19,6	24,5	37,6
Fuel/Cooling	Diesel/Water	Diesel/Water	Diesel/Water	Diesel/Water
<b>TANK CAPACITY</b>				
Tank capacity (L)	390	527	860	860
<b>FUEL TANK AUTONOMY (HOURS)</b>				
at 100% PRP load	26,2	21,6	24,6	18,7
at 75% PRP load	32,8	26,9	35,1	22,9
<b>DIMENSIONS</b>				
	M3128	M3129	M3226	M3226
Length (mm)	2545	2545	3520	3520
Width (mm)	1150	1191	1190	1190
Height (mm)	1824	2000	2120	2120
Weight in running order (in kg)	2040	2567	3418	3586
<b>INSTRUMENTATION &amp; CONTROL</b>				
APM*	303	303	303	303

\* Advanced Power Management

(1) PRP: Prime power available continuously with variable load for an unlimited time per year in accordance with ISO 8528-1

(2) ESP: Standby power available for emergency use under variable load in accordance with ISO 8528-1, no overload available under this service

# Equipment and options

## Focus

### Basic equipment shared

by ce and non-ec-compliant generating sets

REF		C5 (EC-certified)	C3 - RC (Not EC-certified)
HB	Analog engine display	•	•
HE	Tetrapolar circuit breaker	•	•
HAG	Reinforced alternator protection for extreme environments	•	•
NA	Working hours counter	•	•
HP	Battery isolating switch	•	•
HAD	Heavy duty air filter with interchangeable cartridge	•	•
NA	Watertight wiring harness	•	•
HY	Double walled base frame and high autonomy + retention container	•	•
HAB	Drainage pump	•	•
HR	Diesel separator pre-filter	•	•

• Standard

### Sockets pack options

for ce-compliant and non-ec-compliant generating sets

M3126 (R20C5)								
TYPE	INDUSTRIAL TYPE				DOMESTIC TYPE			
SOCKET TYPE	400 V (3P+N+E)				230V (2P+T)		230V (2P+T)	
Socket rating	125A	63A	32A	16A	32A	16A	10/16A NF	10/16A DIN (Schucco)
UK	-	-	1	-	3	-	-	-
FR/BEL/EU	-	-	1	1	-	1	Adapter	1

M3128 (R50C5-R66C3)								
SOCKET TYPE	400 V (3P+N+E)				230V (2P+T)		230V (2P+T)	
Socket rating	125A	63A	32A	16A	32A	16A	10/16A NF	10/16A DIN (Schucco)
UK	1	1	-	-	4	-	-	-
EU	1	1	1	1	-	1	Adapter	1
FR/BEL	1*	1*	1	1	-	1	Adapter	1

M5129 (R110C5) / M3129 (R110C3)								
SOCKET TYPE	400 V (3P+N+E)				230V (2P+T)		230V (2P+T)	
Socket rating	125A	63A	32A	16A	32A	16A	10/16A NF	10/16A DIN (Schucco)
UK	1	1	-	-	4	-	-	-
EU	1	1	1	1	-	1	Adapter	1
FR/BEL	1*	1*	1	1	-	1	Adapter	1

M5226 (R165C5-R220C5) / M5227 (R330C5) / M3226 (R165C3-R220RC)								
SOCKET TYPE	400 V (3P+N+E)				230V (2P+T)		230V (2P+T)	
Socket rating	125A	63A	32A	16A	32A	16A	10/16A NF	10/16A DIN (Schucco)
UK	1	1	-	-	4	-	-	-
EU	1	1	1	1	-	1	Adapter	1
FR/BEL	1*	1*	1	1	-	1	Adapter	1

M5228 (R550C5)								
SOCKET TYPE	400 V (3P+N+E)				230V (2P+T)		230V (2P+T)	
Socket rating	125A	63A	32A	16A	32A	16A	10/16A NF	10/16A DIN (Schucco)
UE	-	-	1	-	-	1	Adapter	1

\* Sockets protected by slave switch

### VARIABLE SPEED FAN

Only available for the EC-compliant range from 165 to 550 kVA.

Used to automatically adjust the fan speed depending on the load and ambient temperature. Depending on these parameters, the savings on fuel consumption can be considerable.

### Portable range

#### GENERATING SETS & WELDING SETS

**P1H:** 1 230V 10/16A socket with circuit breaker + 1 x 230V 32A socket with circuit breaker

**P1J:** 1 230V 10/16A socket with circuit breaker + 1 400V 16A socket with circuit breaker

**P1L:** 2 x 230V 10/16A sockets with circuit breaker

**P1ZD:** 1 230V 10/16A socket with circuit breaker + 1 230V 16A socket with circuit breaker + 1 x 230V 32A socket with circuit breaker + working hours counter + indicator light + APM202

**P1ZE:** 1 230V 10/16A socket with circuit breaker + 1 230V 16A socket with circuit breaker + 1 400V 16A socket with circuit breaker + working hours counter + indicator light + APM202

**P1ZL:** 2 x 230V 10/16A sockets with circuit breaker + 1 230V 16A socket with circuit breaker + 1 x 230V 32A socket with circuit breaker + emergency stop button + working hours counter + indicator light + APM202

**P1ZM:** 1 230V 10/16A socket with circuit breaker + 3 230V 16A sockets with circuit breaker + 1 400V 16A socket with circuit breaker + emergency stop button + working hours counter + indicator light + APM202

## Electrical options

REF		C5 (EC-certified)							C3 - RC (Not EC-certified)			
		R20C5	R50C5	R110C5	R165C5	R220C5	R330C5	R550C5	R66C3	R110C3	R165C3	R220RC
HI80	Adjustable differential protection and earthing rod	o	•	•	•	•	•	•	•	•	•	•
HI81	APM403 central console (Solo)	o	•	•	•	•	•	•	o	o	o	o
HI87 HI109 HI112	Socket panel (FRA/BEL, EU, UK)	o	o	o	o	o	o	•	o	o	o	o
HI88	Dual frequency	x	o	o	o	o	o	o	o	o	o	o
HI91	EDF pack	x	o	o	o	o	o	o	x	x	x	x
HI93	Adjustable mains detector and normal/emergency switching in control unit (U +- 15%)	x	o	o	o	o	o	o	o	o	o	o
HI94	Fixed remote report pack (genset operation, general fault, low fuel level alarm or fault excluding fuel tank on bulk tank)	o	o	o	o	o	o	o	o	o	o	o
HI98	Supervision prewiring via GSM/GPRS/3G/4G/GPS telephone network	o	o	o	o	o	o	o	o	o	o	o
HI100	Electronic control device with speed adjustment	o	•	•	•	•	•	•	o	•	•	•
HI104	Circuit breaker motorization	x	o	o	o	o	o	o	o	o	o	o
HI105	Coupling between gensets, A633/A631 configuration	x	o	o	o	o	o	o	o	o	o	o

## Mechanical options

REF		C5 (EC-certified)							C3 - RC (Not EC-certified)			
		R20C5	R50C5	R110C5	R165C5	R220C5	R330C5	R550C5	R66C3	R110C3	R165C3	R220RC
HI72	Hot part protection (ISO 8528-13 EC standard)	•	•	•	•	•	•	•	o	o	o	o
HI73	Air preheating	•	•	•	•	•	x	•	•	•	•	•
HI83	3-way valve + push pull	o	o	o	o	o	o	o	o	o	o	o
HI84	Automatic pack <sup>(1)</sup>	o	o	o	o	o	o	o	o	o	o	o
HI85	Custom color	o	o	o	o	o	o	o	o	o	o	o
HI86	EC-compliant road trailer	o	o	x	x	x	x	x	x	x	x	x
HI89	Spare wheel with holder	o	o	x	x	x	x	x	x	x	x	x
HI95	Shut-off valve with manual reset	o	o	o	o	o	o	o	x	x	x	x
HI95 elec	Shut-off valve with electrical reset	o	o	o	o	o	o	o	o	o	o	o
HI96	Spark arrester	o	x	x	x	x	x	x	o	o	o	o
HI97	Retention container with no drainage	o	o	o	o	o	o	o	x	x	x	x
HI101	Low capacity base frame tank	x	x	o	x	x	x	x	x	x	x	x
HI108	Retention container fault	o	o	o	o	o	o	o	o	o	o	o
HI201	3-valve + fuel quick connector push pull	o	o	o	o	o	o	o	o	o	o	o

## Accessories

REF		C5 (EC-certified)							C3 - RC (Not EC-certified)			
		R20C5	R50C5	R110C5	R165C5	R220C5	R330C5	R550C5	R66C3	R110C3	R165C3	R220RC
HI99	T-shaped earthing rod with reinforcement	o	o	o	o	o	o	o	o	o	o	o
HI103	Fuel quick-release connector on customer side	o	o	o	o	o	o	o	o	o	o	o
HI106	Current transformer unit for two gensets	x	o	o	o	o	o	o	o	o	o	o

- Standard
- o Optional
- x Unavailable
- (1) Preheating + battery charger

# Rental power control units

a range of rehlko  
*specific control units*

SPECIFICATIONS	APM303	APM403
<b>DISPLAY</b>		
Frequency	•	•
Line-to-neutral voltages	•	•
Composite voltages	•	•
Currents	•	•
Active/reactive/apparent power	•	•
Power factor	•	•
Mains power detection	x	•*
Battery voltage	•	•
Battery current	x	◦
Start-up delay	•	•
Fuel level	•	•
Oil pressure	•	•
Coolant temperature	•	•
Oil temperature	x	◦
Total working hours counter	•	•
Partial working hours counter	x	•
Total active/reactive energy meter	•	•
Generating set speed	•	•

<b>FAULT INFORMATION (fault or alarm)</b>		
Min/max alternator voltage	•	•
Min/max alternator frequency	•	•
Min/max battery voltage	•	•
Overload and/or short circuit	•	•
Active/reactive power return	x	•*
Oil pressure	•	•
Coolant temperature	•	•
Overspeed	•	•
Underspeed	•	•
Low fuel level	•	•
Emergency stop fault	•	•
Non-starting fault	•	•
Charging alternator fault	•	•
Earthing relay activation fault	◦	•
General alarm	•	•
General fault	•	•
Sound alarm	◦	◦
Fully compatible with SAE J1939	◦	•

SPECIFICATIONS	APM303	APM403
<b>OPERATION</b>		
Power ON	•	•
Generating set manual starting	•	•
Generating set automatic starting	•	•
Generating set shutdown	•	•
Emergency stop	•	•
Menu navigation using color touch screen	x	x
Navigation in menu using button	•	•
Speed adjustment	◦	◦**/•*
Voltage adjustment	◦	◦**/•*
Controller redundancy	x	x
Dual frequency	x	•
Delayed start programming	x	•
Multilingual using pictograms	•	x
Multilingual text	x	•

<b>CONNECTIVITY</b>		
MODBUS TCP/IP	x	◦
RS485 (MODBUS RTU protocol)	•	•
SNMP protocol	x	◦
Local WEB access	x	◦
Remote WEB access	x	◦
USB port (download config and software)	•	•
Remote control HMI	x	x

<b>COUPLING</b>		
Stopped	x	x
Under load	x	•*
Power plant continuity in case of inter controller communication fault	x	•*
Power management of the plant "Start up and shutdown of one or more generators based on the power requested by the installation"	x	•*
Short-term synchronization of the Out/Return grid	x	•*
Power plant parallel coupling to grid (temporary, permanent, etc.)	x	x

<b>GENERAL</b>		
Downloading of a customized configuration via USB port	•	•
Download of the firmware configuration + existing settings via USB port	•	•

\*Advanced Power Management

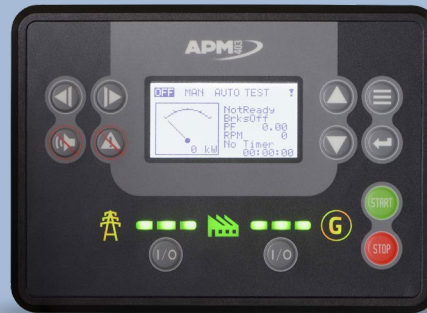
• Standard  
 x Not available  
 ◦ Optional  
 \* APM403P (coupling version)  
 \*\* APM403S (solo version)

## Control panels

APM303  
APM403



Control unit  
**APM303**



Control unit  
**APM403**  
(APM403P version)

Rehko offers a range of specific electrical control units to cover all types of usage, from the most simple to the most complex.

### APM303, the essentials made simple

This control unit is mounted on a central console on the EC compliant R20C5 model and on not EC compliant models up to 220 kVA. It offers high-quality basic functions, allowing easy and reliable operation of your generating set. This control unit is mounted on a central console on all generating sets designed for LV industrial applications with and without an automatic transfer switch.

### APM403, intuitive, simple and connected

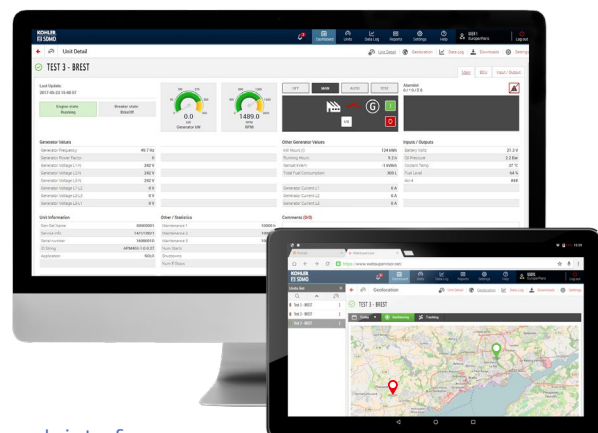
The APM403 is available in two different configurations:

- **APM403S** for solo applications
- **APM403P** for coupling between generating sets and parallel coupling of a single generating set to the grid

### Remote management and supervision

Remote management and supervision web interface available for **APM403** controllers, called WEBSUPERVISOR.

Available as an option, it offers a range of options, from supervision of a single generating set to management of a complete group (installation geolocation, dashboards, etc.). The generating set operating parameters are sent to a server via GSM/3G/4G communication. This interface can be accessed from a PC, a tablet or a smartphone.



web interface  
**WEBSUPERVISOR**



## focus

**2-YEAR\* OR  
4000-HOUR WARRANTY**

For your safety and peace of mind, Rehlko provides a 2-year warranty for all of the generating sets in the Rental Power range between 20 and 550 kVA

# Always close by and at *your service*

Rehlko is on hand to assist you in using and maintaining your Rental Power gensets.

Our teams are in constant contact with Rehlko Brest, which means they can respond to all of your needs.

These technical partners undergo continuous training in product developments and new technologies. Rehlko offers support to provide tailored responses and services as quickly as possible.



- 1** Headquarters and production site (31,000 m<sup>2</sup>) - Brest, France
- Subsidiaries + offices + Rehlko partners

\*A Rehlko team based in Brest offers support for our customers outside Europe.

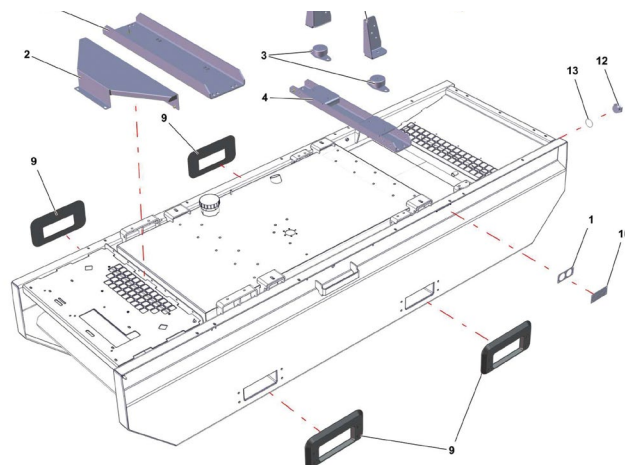
\*This warranty only applies if strict usage and maintenance criteria are respected. For more details, please contact the commercial sales department. This warranty covers generating sets from 20 to 550 kVA



## Technical support

### GUARANTEEING THE RELIABILITY OF OUR PRODUCTS

**So that you are never without energy.** Here and elsewhere, the After-Sales team will quickly respond to any technical question or difficulty encountered with a generating set, from the moment it is installed. Rehlko Service centers are in constant contact with Rehlko's technicians, enabling them to provide quick, tailored solutions.



## Spare parts

### AN EFFICIENT, WELL-INTEGRATED NETWORK

While the hub of the spare parts management system is in Brest, Rehlko draws on its Service centers to ensure it can respond to customers' needs. Parts supplied as quickly as possible, at the most competitive price; yet further reassurance for those who have placed their trust in Rehlko generating sets. In addition, the close partnerships Rehlko has formed with its suppliers allow it to offer highly competitive rates on engine and alternator parts.

### TOOL FOR IDENTIFYING SPARE PARTS

Rehlko has implemented a new spare parts search tool called **Rehlko Power Parts (KPP)**. To access it, please get in touch with your main Rehlko contact. Also available online.



## Training

### ENSURING THE BEST POSSIBLE RESPONSE

The Rehlko training department aims to provide our service technicians and their customers with the knowledge required to use and maintain our generating sets. Led by professionals trained using our methods, these training sessions use simulators which can reproduce the various different configurations, relying on both innovative and tried and tested technologies. The training programs are organised by topic and by level, so that they can be adapted to the skills of each individual.

