



RETROFIT

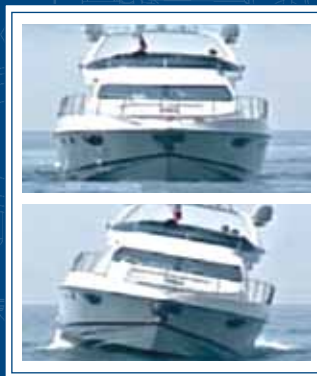
ANY VESSEL

SEAKEEPER™ GYROSCOPIC STABILIZERS ARE THE MOST EFFECTIVE ZERO-SPEED ANTI-ROLLING DEVICES EVER MADE.

Whether at anchor or underway, Seakeeper Gyros provide the enhanced comfort and safety expected by boaters around the world. With active motion control and advanced cooling technologies, each gyro is highly effective over a wide range of sea conditions and vessel speeds – without the need for external appendages. Electrically-driven and operating in a proprietary vacuum-sealed sphere, Seakeeper's compact gyros spin faster, weigh less, and consume less power – while producing the utmost in anti-roll capability.



**EFFICIENT, QUIET AND VIRTUALLY MAINTENANCE-FREE—
NOTHING TAMES THE SEA LIKE A SEAKEEPER™ GYRO.**



GYRO ON

GYRO OFF

**CONTACT YOUR LOCAL DEALER
BELOW FOR MORE INFORMATION**

ELIMINATE BOAT ROLL FOREVER



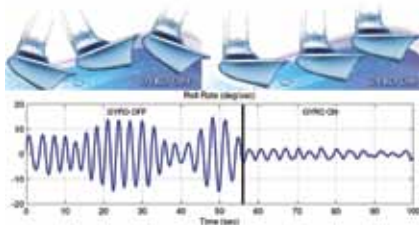
SEAKEEPER®
GYRO STABILIZERS



PROVEN PERFORMANCE

For a stable platform on the water—for work or pleasure—accept no substitute. Seakeeper gyro stabilizers anti-roll performance is unmatched at zero and at low speeds. The result is the

utmost in luxury and comfort on private yachts, and maximizing profitability and productivity on commercial and military vessels.



Seakeeper dramatically reduces seasickness and fatigue, while enhancing safety for all on board. With nothing outside the hull to create excess drag or get damaged, Seakeeper gyro stabilizers continue to amaze boat owners and captains who have chosen the ultimate anti-roll solution.

We have shipped hundreds of units to most of the major luxury yacht, trawler, and sport fish builders worldwide, and we are now shipping to the commercial work boat, and military markets as well. Major boat builders, naval architects, and military leaders are reaping the benefits of Seakeeper gyro stabilizers and boasting resonant roll reductions of 60-70% and higher!



REFIT ANY BOAT

Many options are available when installing a Seakeeper Gyro to enhance your current vessel and change the way you boat forever. We have installed our systems in most major brands, models, and styles of boats with a variety of layouts. Seakeeper gyros are completely internal, lightweight, compact, and require very low power. And best of all, Seakeeper's unique in-hull design requires no external fins or through hull appendages!

The refit process is as easy as 1-2-3.
1. Ask your local service center or dealer about incorporating Seakeeper into your boat.
2. Receive a formal installation and commissioning quotation based on the access and space requirements and contract with your preferred yard for installation.
3. Enjoy your "new" boat.
For a free assessment of your boat, contact your local Seakeeper dealer.



Gyro installation in the hull.

GLOBAL INSTALLATION NETWORK

Seakeeper has established a global installation and service network that includes some of the finest and most reputable marine companies and technicians in the industry. We have certified installers and service centers set up near the waterways where you boat. You can be assured Seakeeper's trained personnel will always be in a position to provide the service and support where and when you need it.



ULTIMATE COMFORT IS SIMPLE & EASY



Seakeeper's systems are simple to install, easy to operate and virtually maintenance-free. With the push of a button, you can literally stop your boat from rolling and make a good day on the water a great day. To find out how you can put the biggest breakthrough in vessel stability to work for you, visit our website www.seakeeper.com. See featured installations, performance videos, and get the information that demonstrates how a Seakeeper gyro stabilizer can change the way you boat forever. Be sure to check out our dealer locator section to find your local dealer, installation and support center.

Cruise or anchor out in comfort. Fish more often and more effectively. Improve the overall productivity and profitability of your commercial marine business. Choose Seakeeper Gyro Stabilizers and feel the future of boating.